

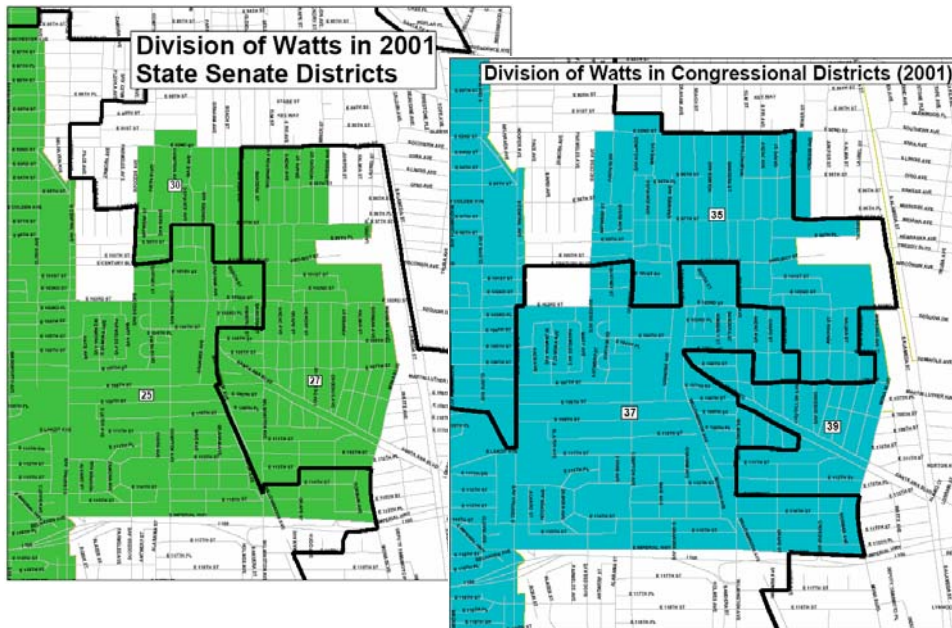
YES ON PROP 11!

WHY DO WE NEED PROP 11?

HOW DOES THE STATUS QUO HURT MINORITY COMMUNITIES?

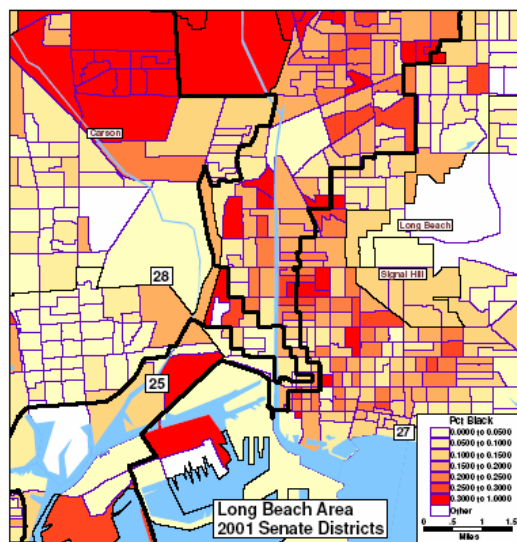
In 2001, legislators drew district lines that cut up minority communities throughout California to protect incumbent interests.

Watts is spit into 3 Senate districts, and 3 Congressional districts.

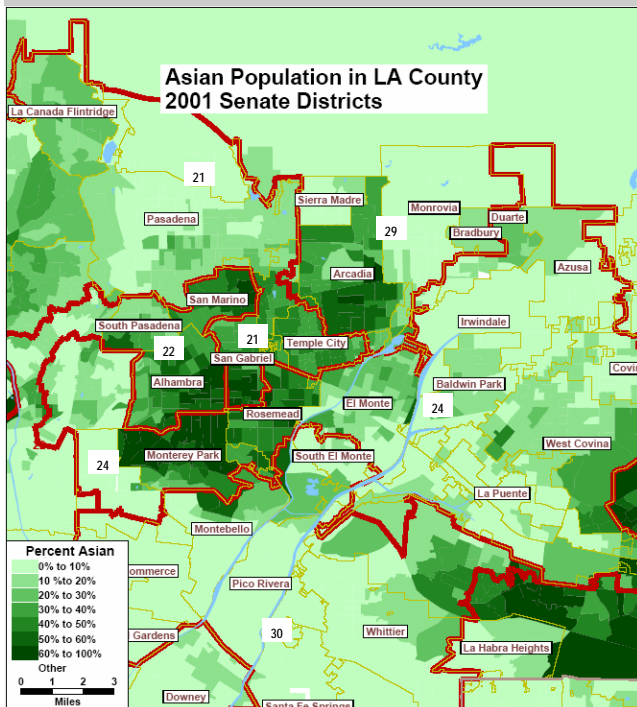


It's time for CHANGE. Vote YES on Proposition 11 in November!

Long Beach's Black community is split into 3 Senate districts.



LA's Asian American San Gabriel Valley community is split into 4 Senate districts.



San Diego's Latino Barrio Logan is split into several Senate districts.

